

Microlin

Closed Frame optical Linear encoder system

User Guide

Inoservo.Co.,Ltd.

Science & Technology Park

ShenZhen China

Tel.: +86 (0) 755 86008400

E-mail : info@inoservo.com

<http://www.inoservo.com>

- Closed Frame optical system
- Compact size
- Low mass
- Integral interpolation
- Digital and analogue output options
- Resolutions from 5 μm to 10 nm
- Integral set-up LED
- Low expansion coefficient 20 μm glass scale



Digital range

Normal Resolution

Mic2K-5 μm
 Mic2L-1 μm
 Mic2A-0.5 μm
 Mic2B-0.1 μm
 Mic2C-0.05 μm
 Mic2D-0.01 μm

Special Resolution

Mic2E-0.8 μm
 Mic2F-0.4 μm
 Mic2G-0.25 μm
 Mic2H-0.2 μm
 Mic2I-0.025 μm
 Mic2J-0.02 μm

Analogue range

Mic2AA-Vp-p differential

Inoservo's Microlin linear encoder system is a closed frame optical encoder designed for position feedback solutions.

The system uses a low expansion coefficient 20 μm glass scale scanned by a readhead chosen from a range of options offering industry standard digital square wave or analogue sinusoidal output signal formats.

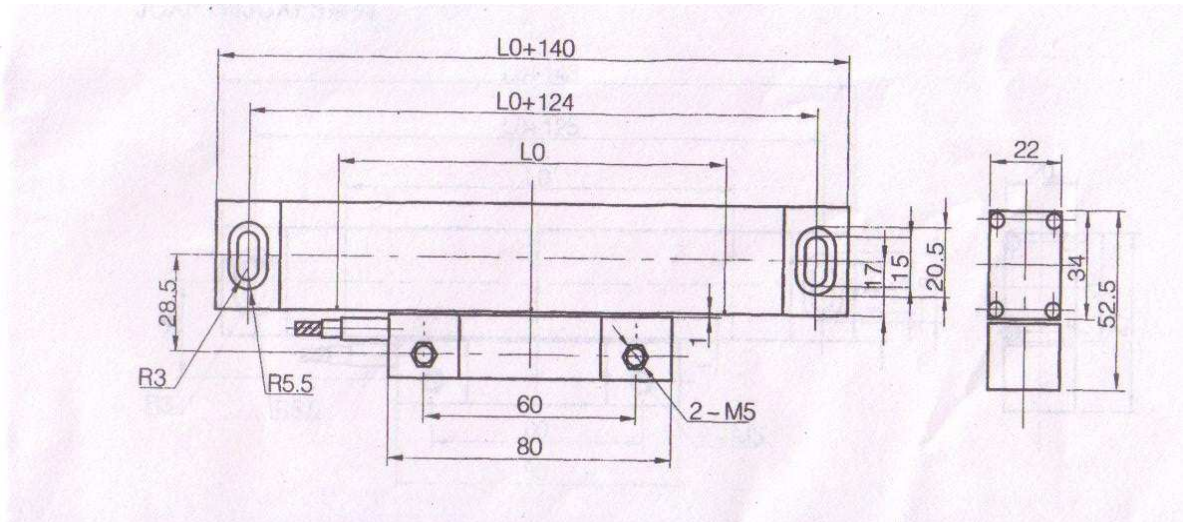
Inoservo's unique patented optical scheme is used in all readhead series to provide high tolerance to scale contamination. Microlin is an ideal feedback solution wherever precision controlled movement is required.

The Microlin readheads offer a wide selection of output configurations and their compact size and low mass makes the system ideal for small XY stages and actuators.

An integral set-up LED enables quick and easy installation.

Common applications include semiconductor/electronics manufacturing and inspection, coordinate measuring and layout machines, height gauges, linear motors, pre-press printing and a variety of custom linear motion solutions.

Installation drawing:



Output definition:

Pin	1	2	3	4	5	6	7	8	Shield
Colour	Red	Black	White	Grey	Blue	Purple	Brown	Green	Silver
Function	5V	GND	A+	A-	B+	B-	Z+	Z-	Shell

System data:

Power supply:	5V $\pm 5\%$
Power consumption:	<30mA (without any load)
Temperature:	-10-80 Deg
Environmental sealing:	IP67
Vibrations:	10G
Cable :	8* AWG26 high flexible cable, drag-chain compatible, variable cable length is optional