

HK NATER TECH LIMITED

RL-SM02BD-8723AS Module specification

Customer: _____

Description: RL-SM02BD-8723AS V1.0

Customer P/N: _____

Date: _____

Customer		
Approve	Auditing	Admit

Provider		
Approve	Auditing	Admit

Customer:

Add:

Tel:

Fax:

Attn:

E-mail:

Web:

Provider:HK NATER TECH LIMITED

Add: 2F,NO.27,2 Baomin Rd.,Baoan Dist.SZ City,China

Tel:0086-755-61522172/13510620050

Fax:0086-755-61522171

Attn:Lingo

E-mail:hsdgood@163.com

Web:http://www.natertech.com

SDIO PRODUCT SPECIFICATION

**IEEE 802.11 b/g/n 2.4GHz 1T1R WiFi with Bluetooth
v2.1+EDR/Bluetooth 3.0/3.0+HS/4.0**

**RL-SM02BD (Realtek RTL8723AS)
Combo Module**

Version 1.1

CONTENT

PRODUCT DESCRIPTION.....	3
PRODUCT FEATURES.....	3
PRODUCT SPECIFICATIONS.....	4
MAIN CHIPSET	4
FUNCTIONAL SPECIFICATIONS.....	4
MECHANICAL	7
BLOCK DIAGRAM.....	8
MODULE PIN ASSIGNMENT.....	10
ID SETTING INFORMATION.....	11
ENVIRONMENTAL.....	11
OPERATING	11
STORAGE.....	11
Circuit reference pictures.....	11
Module PIN feet definition figure.....	11
WIFI\BT RF Circuit reference pictures.....	11
SDIO interface Circuit reference pictures.....	12
BT interface Circuit reference pictures.....	12
Recommended Reflow Profile.....	13
MTBF CACULATION.....	14

PRODUCT DESCRIPTION

RL-SM02 is a small size and low profile of WiFi+BT combo module with LGA (Land-Grid Array) footprint, board size is 20mm*10mm with module height 2mm. It can be easily manufactured on SMT process and highly suitable for tablet PC, ultra book, mobile device and consumer product. It provides GSPI/SDIO interface for WiFi to connect with host processor and high speed UART interface for BT. It also has a PCM interface for audio data transmission with direct link to external audio codec via BT controller. The WiFi throughput can go up to 150Mbps in theory by using 1x1 802.11n b/g/n MIMO technology and Bluetooth can support BT2.1+EDR/BT3.0 and BT4.0.

RL-SM02 uses Realtek RTL8723AS, a highly integrated WiFi/BT single chip based on advanced COMS process. RTL8723AS almost integrates whole WiFi/BT function blocks into a chip, such as SDIO/UART, MAC, BB, AFE, RFE, PA, EEPROM and LDO/SWR, except fewer passive components remained on PCB.

PRODUCT FEATURES

- Operate at ISM frequency bands (2.4GHz)
- GSPI/SDIO for WiFi and UART for Bluetooth
- IEEE standards support: IEEE 802.11b, IEEE 802.11g, IEEE 802.11n, IEEE 802.11d, IEEE 802.11e, IEEE 802.11h, IEEE 802.11i
- Fully Qualified Bluetooth 2.1 + EDR specification including both 2Mbps and 3Mbps modulation mode
- Fully qualified Bluetooth 3.0
- Fully qualified Bluetooth 4.0 Dual mode
- Full –speed Bluetooth operation with Piconet and Scatternet support.
- Enterprise level security which can apply WPA/WPA2 certification for WiFi.
- WiFi 1 transmitter and 1 receiver allow data rates supporting up to 150 Mbps downstream and 150 Mbps upstream PHY rates
- Support sophisticated WiFi/BT coexistence mechanism to enhance collocation performance
- Support antenna diversity for WiFi and BT antenna selection
- Support Bluetooth adaptive power management mechanism
- Full-featured software utility for easy configuration and management
- RoHS compliance
- Low Halogen compliance

PRODUCT SPECIFICATIONS

Main Chips	RTL8723AS-CG		
Standards	WiFi: IEEE 802.11b, IEEE 802.11g, Draft IEEE 802.11n, IEEE 802.11d, IEEE 802.11e, IEEE 802.11h, IEEE 802.11i BT: V2.1+EDR/BT v3.0/BT v3.0+HS/BT v4.0		
Bus Interface	WiFi: GSPI/SDIO BT: UART		
Form Factor	L*W*H = 22.25mm*11.745mm*1.7mm		
Data Rate	WiFi: 802.11b: 11, 5.5, 2, 1 Mbps 802.11g: 54, 48, 36, 24, 18, 12, 9, 6 Mbps 802.11n: MCS 0 to 7 for HT20MHz MCS 0 to 7 for HT40MHz BT: 1 Mbps for Basic Rate 2,3 Mbps for Enhanced Data Rate		
Media Access Control	WiFi: CSMA/CA with ACK BT: AFH, Time Division		
Modulation Techniques	WiFi: 802.11b: CCK, DQPSK, DBPSK 802.11g: 64 QAM, 16 QAM, QPSK, BPSK 802.11n: 64 QAM, 16 QAM, QPSK, BPSK BT: 8DPSK, $\pi/4$ DQPSK, GFSK		
Network Architecture	WiFi: Ad-hoc mode (Peer-to-Peer) Infrastructure mode BT: Pico Net Scatter Net		
Operating Channel	WiFi 2.4GHz: 11: (Ch. 1-11) – United States 13: (Ch. 1-13) – Europe 14: (Ch. 1-14) – Japan BT 2.4GHz: Ch. 0 ~78		
Frequency Range	2.400GHz ~ 2.4835 GHz		
Operating Voltage	3.3 V \pm 9% I/O supply voltage		
OS supported	Windows XP/Win7/Linux/Android		
Power Consumption (3.3V) (Typical)	WiFi : TX Mode: (Conituous mode) 260mA (MCS7/BW40/13dBm) RX Mode: (Conituous mode) 190mA (MCS7/BW40/-60dBm) Associated Idle: 4mA Unassociated Idle: 2.9mA RF disable Mode: 3mA BT : Inquiry & Page Scan: 1.7mA ACL no traffic: 15mA SCO HV3: 20mA Parked 1.28s beacon: 1.12mA Reset: 0.05mA		
Transmit Output Power – 1x1 (Tolerance: \pm 1.5dBm)	WiFi :		
	802.11b@11Mbps 16dBm	802.11g@6Mbps 16dBm 802.11g@54Mbps 14dBm	802.11n 16dBm (MCS0_HT20) 13dBm (MCS 7_HT20) 13dBm (MCS 0_HT40) 13dBm (MCS 7_HT40)
	BT: Max +10dBm		
Receiver Sensitivity	WiFi :		
	802.11b@11Mbps -84dBm	802.11g@54Mbps -73dBm	802.11n -69dBm (MCS7_HT20) -66dBm (MCS 7_HT40)
	BT: -89dBm@1Mbps, -90dBm@2Mbps, -83dBm@3Mbps		
Security	WiFi : WPA, WPA-PSK, WPA2, WPA2-PSK, WEP 64bit & 128bit, IEEE 802.11x, IEEE 802.11i BT: Simple Paring		

Mechanical

	Length	Width	Height
Dimensions (mm)	22.25 (Tolerance:±0.2mm)	11.745 (Tolerance:±0.2mm)	1.7 (Tolerance:±0.2mm)

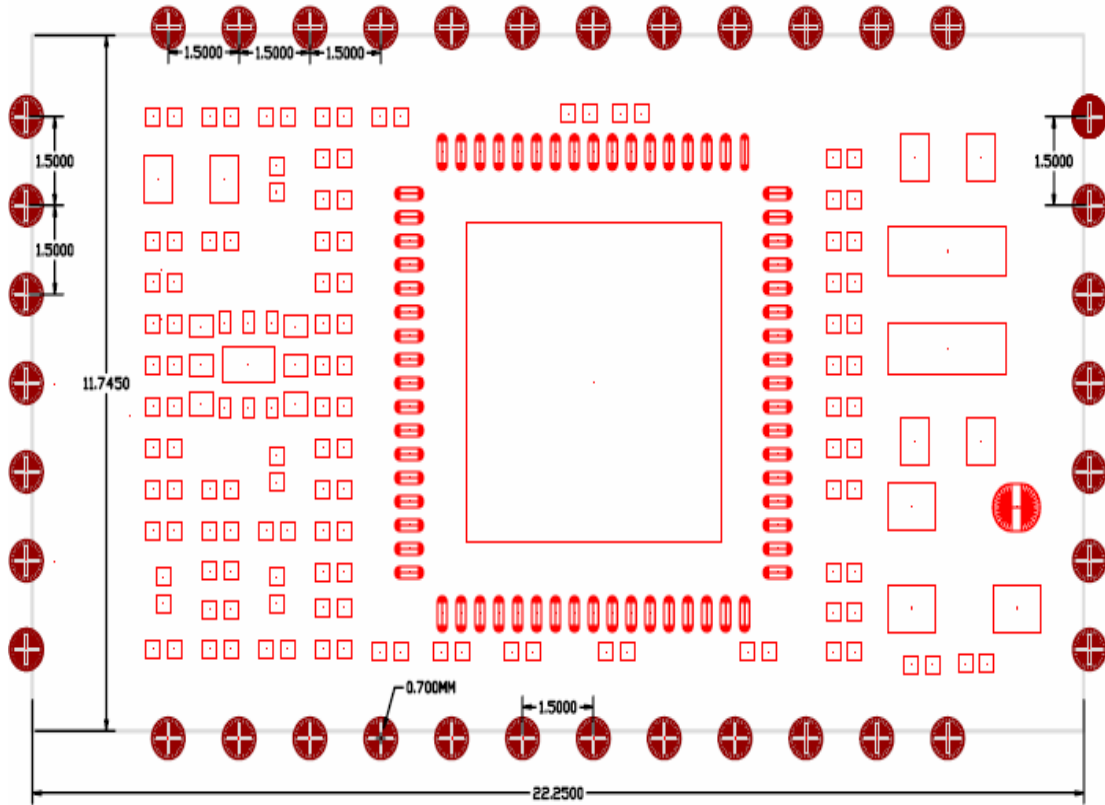
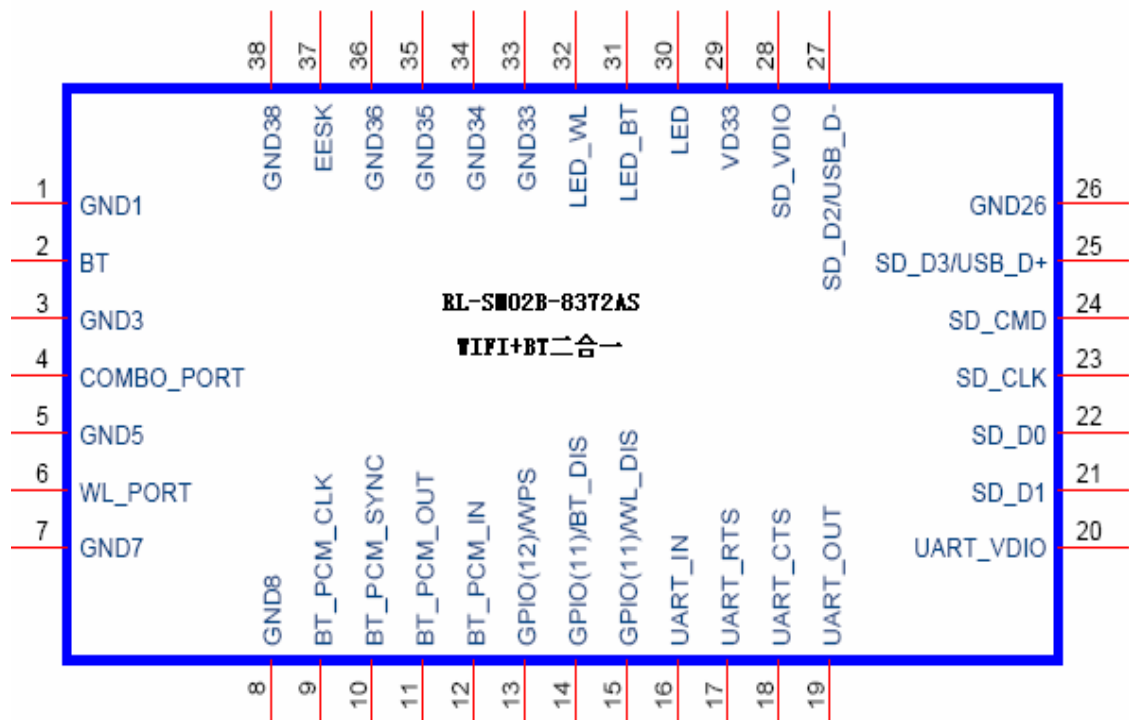


Fig.1 Size chart (Top View)

Module PIN feet definition figure



(2) *This module also reserves flexibility to support separate WiFi/BT RF fixed path without DPDT.*

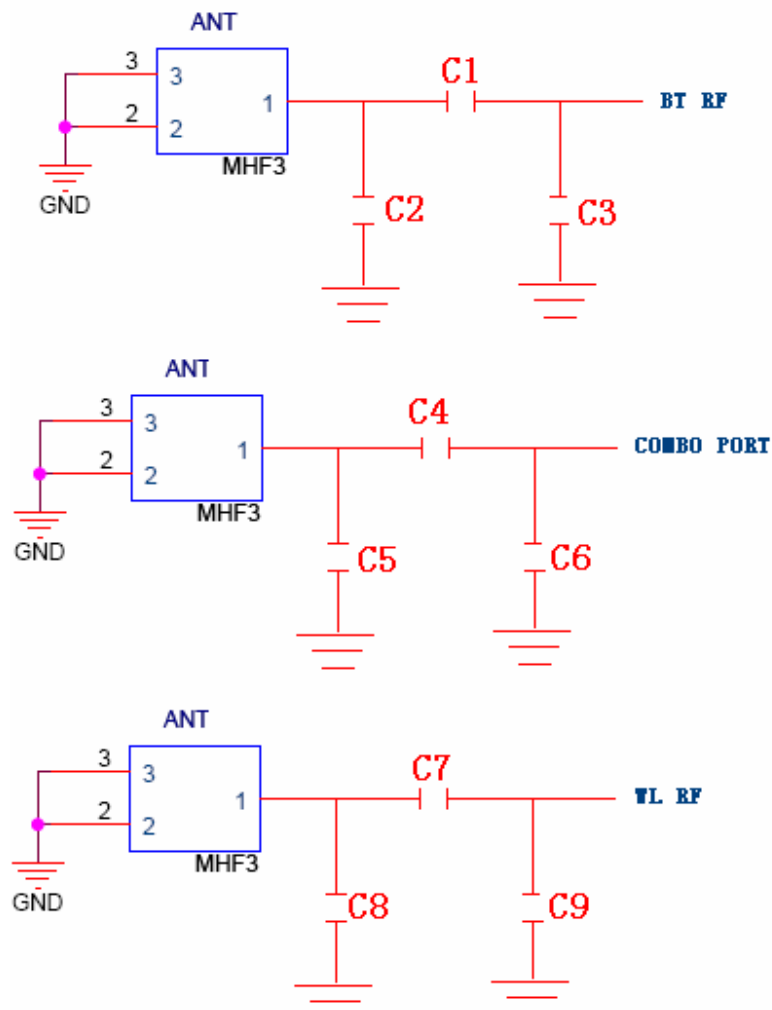
(1) *Option for single antenna. WiFi/BT shares the single RF port and a SPDT required for switching between BT and WiFi.*

- (1) Default this module only require 3.3V single power source and core voltage generated by internal voltage regulator.
- (2) This module reserves flexibility for external power source if system can provide VD12/VD15 for this module

MODULE PIN ASSIGNMENT

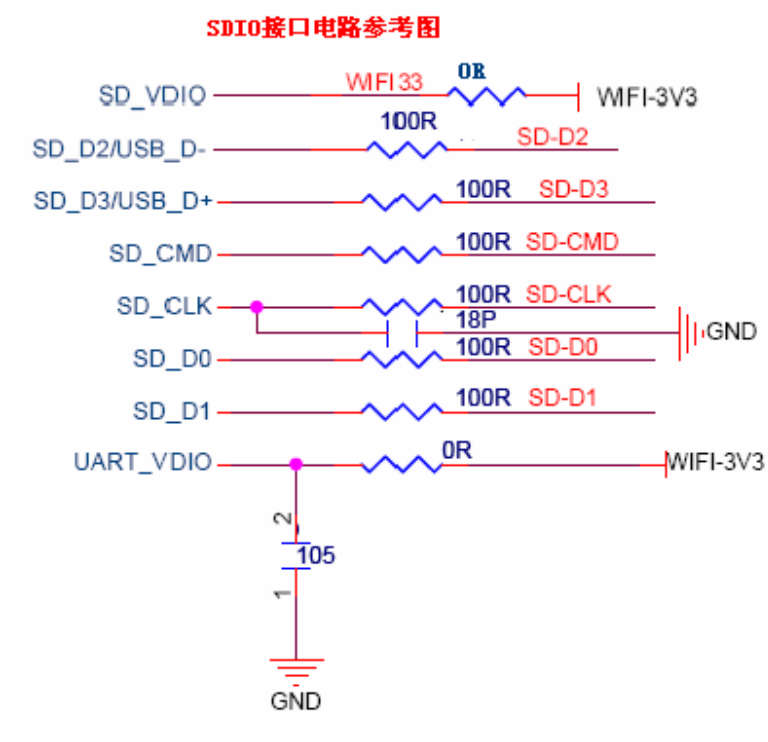
Pin	Function	Pin	Function
1	GND	20	UART_VDIO VDD for UART Pin, the power supply is same as the signal level of UART bus (3.3V ~ 1.8V)
2	BT_RF	21	SD_D1
3	GND	22	SD_D0
4	COMBO_RF	23	SD_CLK
5	GND	24	SD_CMD
6	WL_RF	25	SD_D3/USB_D+
7	GND	26	GND
8	GND	27	SD_D2/USB_D-
9	BT_PCM_CLK General Purpose Input/Output Pin	28	SD_VDIO VDD for SDIO Pin, the power supply is same as the signal level of SDIO bus (3.3V ~ 1.8V)
10	BT_PCM_SYNC	29	VD33
11	BT_PCM_OUT Trap function: weak pull low to enable integrated switching regulator; weak pull high to enable integrated linear regulator . General Purpose Input/Output Pin	30	LED LED Pins (Active Low)
12	BT_PCM_IN Trap function: weak pull low to enable RTL8723 to enter normal operation mode. General Purpose Input/Output Pin	31	LED_BT
13	GPIO(12)/WPS This pin is for WIFI function to wakeup host when remote wake function is enabled. The Polarity can be defined by customer.	32	LED_WL
14	GPIO(11)/BT_DIS This Pin Can Externally Shutdown the RTL8723AS (no requirement for Extra Power Switch) when WL_DISn is pulled low This pin can also support the BT Radio-off function with host interface remaining connected.	33	GND
15	GPIO(11)/WL_DIS This Pin Can Externally Shutdown the RTL8723AS (no requirement for Extra Power Switch) when BT_DISn is pulled low This pin can also support the WLAN Radio-off function with host interface remaining connected.	34	GND
16	UART_IN High-Speed UART Data In	35	GND
17	UART_RTS High-Speed UART RTS	36	GND
18	UART_CTS High-Speed UART CTS	37	EESK
19	UART_OUT High-Speed UART Data Out	38	GND

WIFI\BT RF Circuit reference pictures



注：以上 RF 走线要做 50 欧的阻抗，走线不能走 90 度，走线不能长于 15MM。

SDIO interface Circuit reference pictures



BT interface Circuit reference pictures



PCM interface Circuit reference pictures

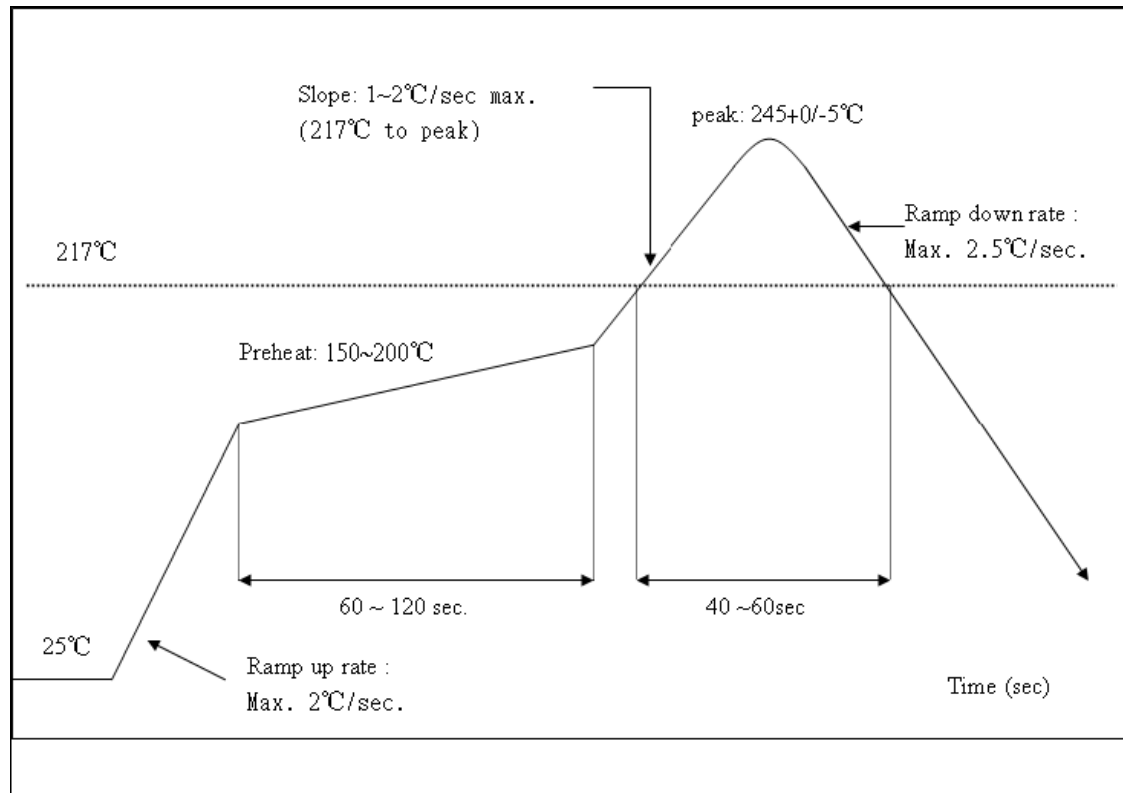


Recommended Reflow Profile

Referred to IPC/JEDEC standard.

Peak Temperature : $<250^{\circ}\text{C}$

Number of Times : ≤ 2 times



ID SETTING INFORMATION

Reg Domain	World Wide 13 Channels 1-11 with active scan Channels 12,13 with passive scan Channel 14 with no scan
Reg Domain Code	0x0A
Vendor ID	WiFi : 0x10EC BT : 0x0BDA
Device ID	WiFi : 0x8723 BT : 0x8723 (PID)
Subsystem Device ID	0x8723 (Realtek demoboard)
Subsystem Vendor ID	0x10EC